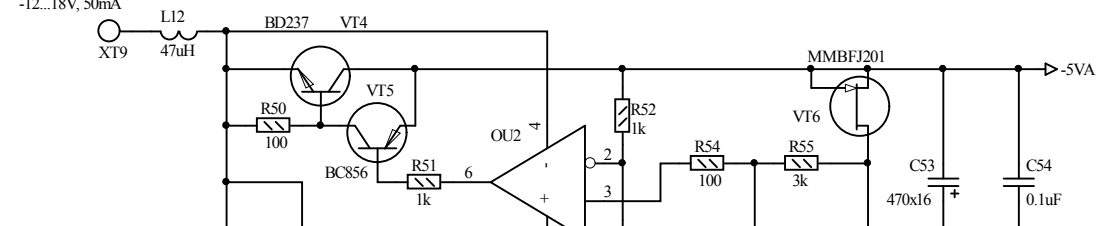
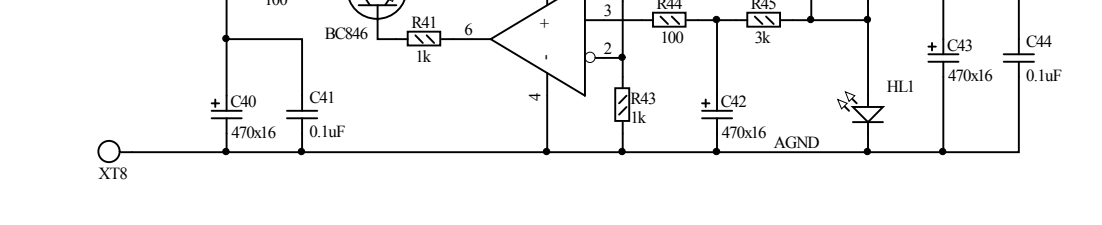
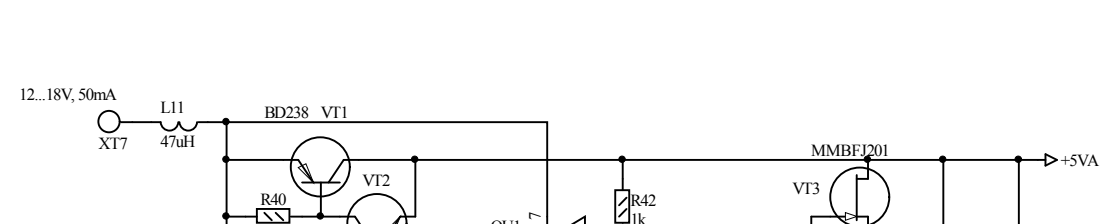
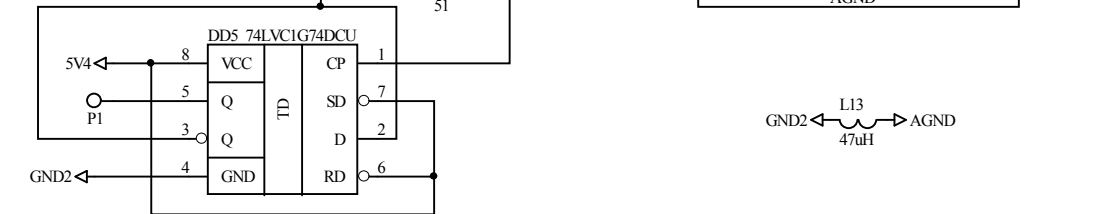


- Из двух микросхем DA3 и DA10 устанавливать только одну, которая есть в наличии.
  - Резистор R39 установить только если вместо DS1834 используется DS1834A
  - Назначение переключки 1-переключки стоит, 0-переключки нет.
- J1: System Clock: 1 - 256 x Fs; 0 - 384 x Fs  
 J2: J3: Input Bit Length: 1:1 - 24Bit; 0:1 - 20Bit; 1:0 - 18Bit; 0:0 - 16Bit  
 J4: J5: Output length: 1:1 - 24Bit; 0:1 - 20Bit; 1:0 - 18Bit; 0:0 - 16Bit

System Clock CLK0 SM5842 можно выбрать равным CLK установив резистор R38.  
 System Clock CLK0 SM5842 можно выбрать равным CLK/2 установив DD5 и замкнуть P2 и P3.

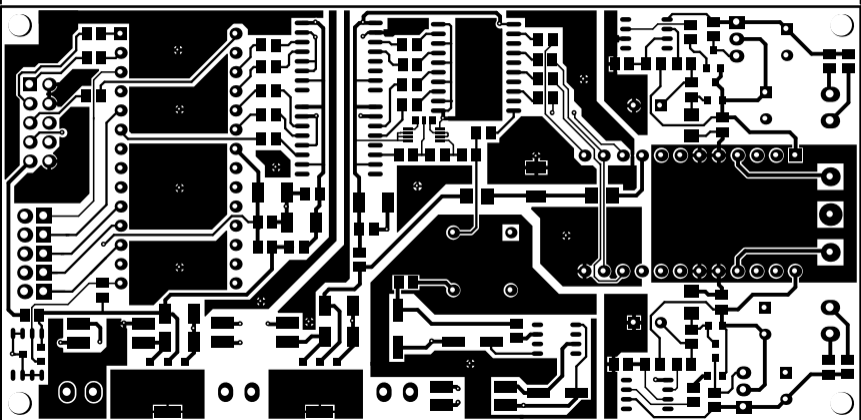
Рабочие режимы для SM5842  
 $F_s=44.1 \text{ kHz}$ ,  $256x F_s=11.2896 \text{ MHz}$  -  $G1=11.2896 \text{ MHz}$  либо  $G1=22.5792 \text{ MHz} / 2$ .  
 $F_s=44.1 \text{ kHz}$ ,  $384x F_s=16.9344 \text{ MHz}$  -  $G1=16.9344 \text{ MHz}$  либо  $G1=33.8688 \text{ MHz} / 2$ .

$F_s=48 \text{ kHz}$ ,  $256x F_s=12.288 \text{ MHz}$  -  $G1=12.288 \text{ MHz}$  либо  $G1=24.576 \text{ MHz} / 2$ .  
 $F_s=48 \text{ kHz}$ ,  $384x F_s=18.432 \text{ MHz}$  -  $G1=18.432 \text{ MHz}$  либо  $G1=36.864 \text{ MHz} / 2$ .

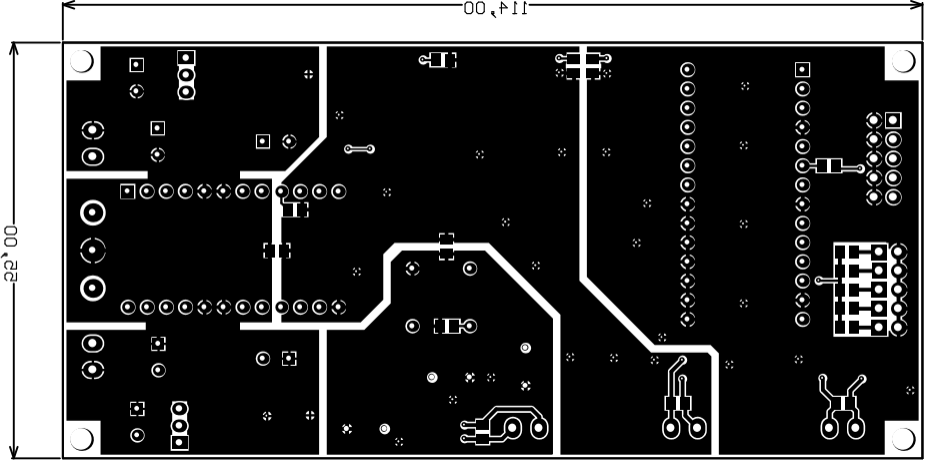


Title		
Size	Number	Revision
A3		
Date:	16.09.2013	Sheet of
File:	E:\Shaman\DAC1865.SchDoc	Drawn By:

114,00

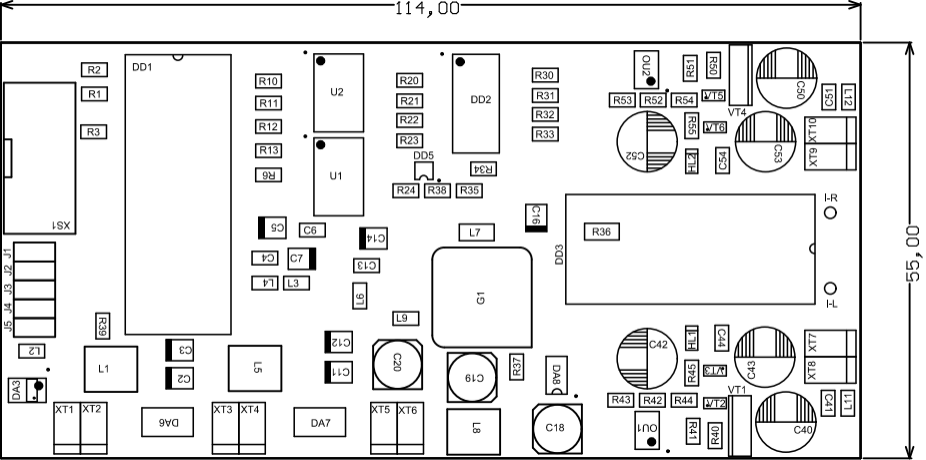


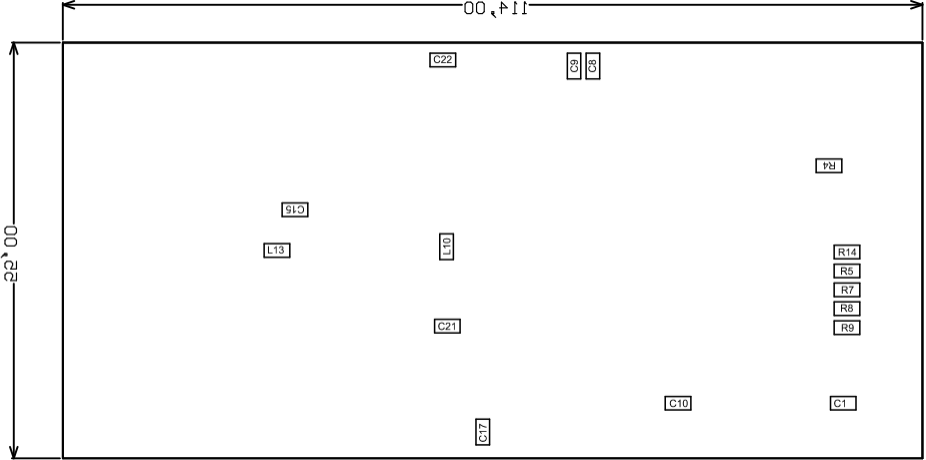
55,00



114,00

55,00





# Bill of Materials

<Parameter Title not found>

Source Data From: DAC1865.PrjPcb  
 Project: DAC1865.PrjPcb  
 Variant: None

Creation Date: 16.09.2013 14:13:39  
 Print Date: 16-Sep-13 2:13:41 PM

Footprint	Comment	LibRef	Designator	Description	Quantity
SMDC-0805	0.1uF	GRM-0805	C1, C4, C6, C8, C9, C10, C13, C15, C17 C21, C22, C41, C44, C51, C54	SMD0805	15
SMDC-B	22x10	SQT-22x10V	C2, C3, C5, C7, C11, C12, C14, C16	Vishay Tantalum; SMD-B	8
SMDC-AD	100x16	ECV-AD 100x10	C18	Vishay Aluminium; Axial; SMD-AD; 6.6x6.6x6.3	1
SMDC-AD	100x10	ECV-AD 100x10	C19, C20	Vishay Aluminium; Axial; SMD-AD; 6.6x6.6x6.3	2
RAD-3.5x8	470x16	RAD-470mFx16V	C40, C42, C43, C50, C52, C53	Rad F2.5D6.3L11	6
SOIC-8CN	DS1834	DS1834AS	DA3	Positiv Constant Voltage Regulator	1
SOT223-4	LM1117MPX-5	LM1117	DA6, DA7	Positiv Constant Voltage Regulator	2
SOIC-8BL	AD586JR	ADR4520	DA8	Positiv Constant Voltage Regulator	1
SOT-23A	MCP100-450/T	MCP100	DA10	Positiv Constant Voltage Regulator	1
DIP-28N	SM5842	SM5842	DD1		1
SOIC-20	74ABT574ADW	74ABT574AN	DD2		1
DIP-24N	AD1865	AD1865	DD3		1
VSSOP-8	74LVC1G74DC	74LVC1G74DC	DD5		1
GHO-U100H	GHO-U100H - 33.8688 MHz	Gen GHO-U100H	G1		1
BL-LS1206	BL-L517	BL-LS1206	HL1, HL2		2
PAD		PAD 0.8	I-L, I-R		2
d0.8D1.4					
PLD-2	Jamper	Jamper	J1, J2, J3, J4, J5		5
B82790	B82790 - 10uH	SMD-B82790	L1, L5, L8		3
SMDL-0805	47uH	SMDL-0805	L2, L3, L4, L6, L9, L10, L11, L12, L13		9
SMDL-1206	47uH	SMDL-0805	L7		1
SOIC-8CN	OP1177	OP1177	OU1, OU2	Single; fast-settling, precision operational amplifier	2
PAD_S_2x2		PAD_S	P1, P2, P3		3
SMDR-0805	51	RC0805	R1, R2, R3, R4, R5, R6, R10, R11, R12, R13, R20, R21, R22, R23, R24, R30, R31, R32, R33, R34, R35, R38	Resistor; Horizontal	22
SMDR-0805	10k	RC0805	R7, R8, R9, R14	Resistor; Horizontal	4
SMDR-1206	1	RC1206	R36	Resistor; Horizontal	1
SMDR-0805	10	RC0805	R37	Resistor; Horizontal	1
SMDR-0805	1k	RC0805	R39, R41, R42, R43, R51, R52, R53	Resistor; Horizontal	7
SMDR-0805	100	RC0805	R40, R44, R50, R54	Resistor; Horizontal	4
SMDR-0805	3k	RC0805	R45, R55	Resistor; Horizontal	2
SOIC-16W	ADum1401CRW	ADum1401	U1		1
SOIC-16W	ADuM1400CRW	ADum1400	U2		1
TO-126	BD238	MJE350	VT1	PNP, TO-126	1
SOT-23A	BC846	BC546_SMD	VT2	NPN, SOT54	1
SOT-23A	MMBFJ201	MMBFJ201	VT3, VT6	N-Ch; MOSF	2
TO-126	BD237	MJE340	VT4	NPN, TO-126	1
SOT-23A	BC856	BC556_SMD	VT5	PNP, SOT54	1
BH-10	BH-10	Con BH-10	XS1		1
DG350		Con DG350	XT1, XT2, XT3, XT4, XT5, XT6, XT7, XT8, XT9, XT10		10

129

Approved	Notes